



# Amscan

## Laundry inspection system

The Image laundry inspection system is a state-of-the-art color inspection system for laundry. It can inspect for stains, holes, rips and deformations. By using an advanced proprietary scanner combined with modern LED based illumination a very stable solution is created for the inspection of laundry as speeds up to 60 m/min.



The Image system can classify laundry based on color, holes, rips and shapes allowing apart handling of the products based on these conditions. The system allows for the definition for an inner and outer inspection zone with different evaluation criteria

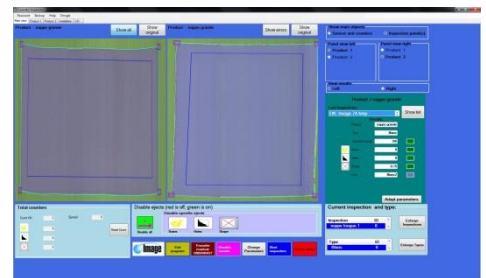
Thanks to the usage of solid state electronics the system doesn't need any tuning once setup.

### Inspection features:

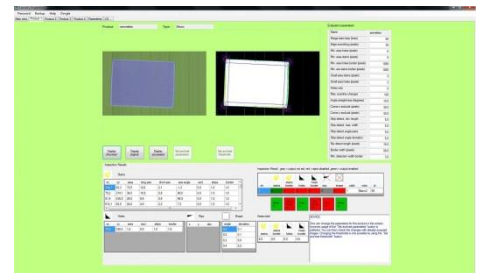
- Can be mounted on every folding machine
- Sorting on color, stains, holes, rips and shape.
- Stable and low maintenance
- Touch screen interface
- Standard up to 4 lanes of operation, option for 8
- Automatic marker line detection
- Areas can be selected with different adjustments.
- High price/performance ratio
- Up to 8 different colored products can be inspected in a lane
- Per line different product settings possible
- Interface for remote setting of the inspection program
- Remote serviceable
- For table linen there is a very precise program available
- Capable of inspecting multi colored linen
- Automatic dust cleaning



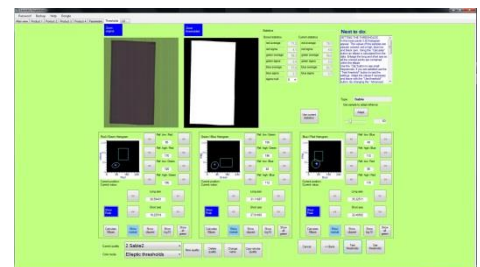
Evaluation for every scanned sheet. Easy to recall sheets which are scanned.



Parameters, can be set, and directly evaluated.



Easily fine tuning of the sensitivity



Accurate Technologies Eu b.v.  
Nobelweg 5  
5482 NN Schijndel  
The Netherlands  
[www.accuratethai.com](http://www.accuratethai.com)

